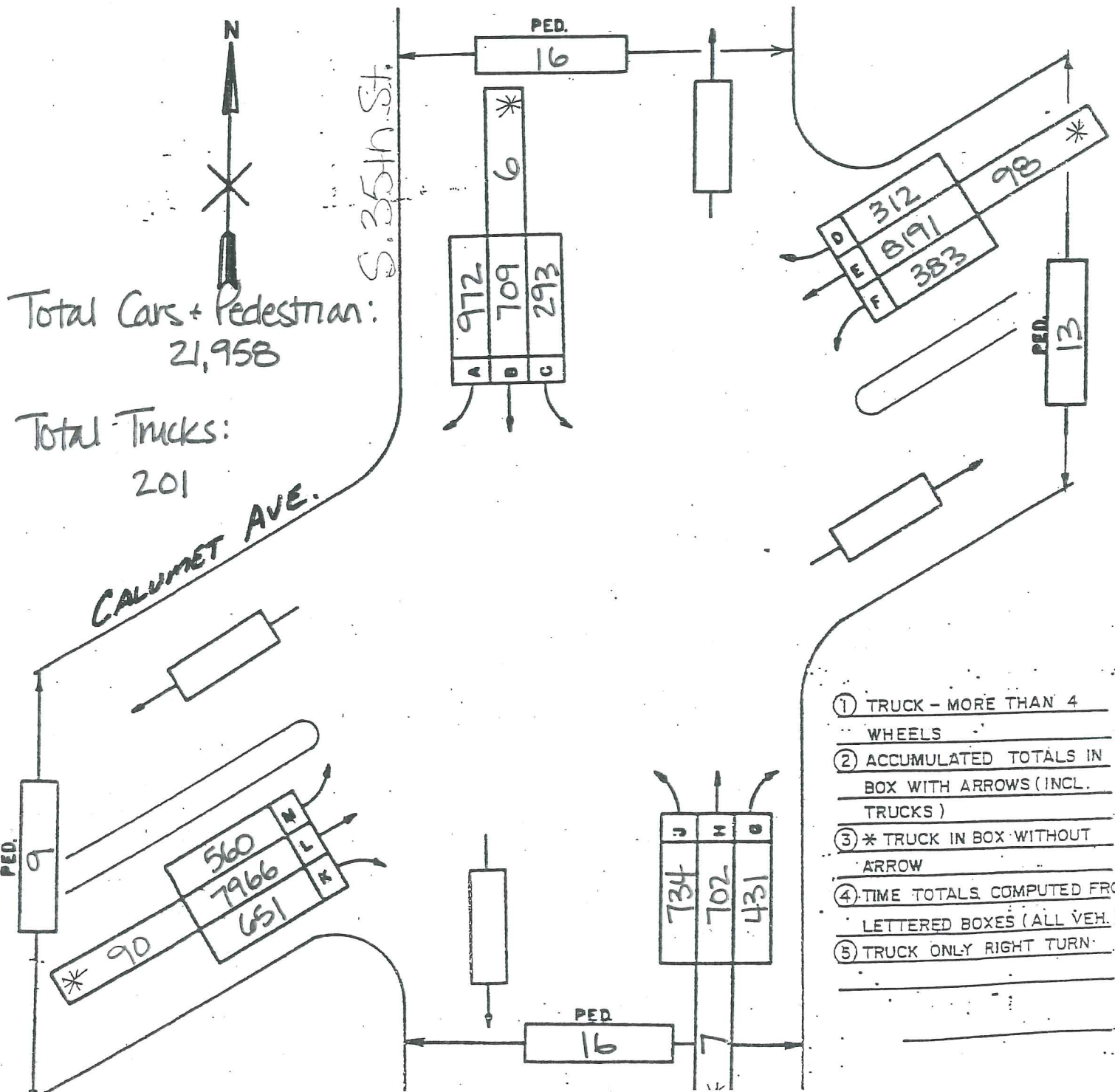


TRAFFIC SURVEY
VEHICLE VOLUME COUNT
GRAPHIC SUMMARY SHEET

DATE FEBRUARY 5, 09 DAY Thursday TIME 6am TO 10pm SHEET OF

INTERSECTION S. 35th St. AND CALUMET AVE

WEATHER Sunny 20's ROAD CONDITION Clear. Dry OBSERVERS DPW



Total Cars + Pedestrian:
21,958

Total Trucks:
201

- ① TRUCK - MORE THAN 4 WHEELS
- ② ACCUMULATED TOTALS IN BOX WITH ARROWS (INCL. TRUCKS)
- ③ * TRUCK IN BOX WITHOUT ARROW
- ④ TIME TOTALS COMPUTED FROM LETTERED BOXES (ALL VEH.)
- ⑤ TRUCK ONLY RIGHT TURN