

Name: _____ Address: _____ City: _____ State: _____ Zip: _____ Phone: _____
 Package: Gold (\$560) Silver (\$470) Bronze (\$115) Other (price determined by City) _____
 Billing Information: Cash Check Invoice Credit Card (service fees will apply)
 Signature: _____ Amount Paid: \$ _____ Date: _____
 E-mail address: _____ Tree Type: _____
 Tree Location: _____

Brick Message:

Gold Package: 8" x 16" granite stone; 5 lines; 16 characters per line; 3/4" letters; Vermarco font

Silver Package: 4" x 8" concrete paver; 3 lines, 12 characters per line; 3/4" letters; Vermarco font

Monument Dealer Choice: Zabel Monuments Hofmann Monuments No Preference

For Office Use:

ORDER: Tree _____ Marker _____ PLACE: Tree _____ Marker _____

**Please return by deadline (see back) to: City of Manitowoc · Parks & Cemetery Division
 900 Quay Street · Manitowoc, WI 54220**



Contact Information

Program Details Contacts

Cemetery & Parks Division
 City of Manitowoc
 900 Quay Street
 Manitowoc, WI 54220
 Ph: (920) 686-3570 (Cemetery) evergreen@manitowoc.org
 Ph: (920) 686-3580 (Parks) parksadmin@manitowoc.org



Tree Information

Trees will be purchased from various suppliers based on availability.

Marker Information

Zabel Monuments, LLC
 1232 N. 8th Street
 Manitowoc, WI 54220
 Ph: 920-684-3829

Hofmann Monuments, Inc.
 3104 Memorial Drive
 Two Rivers, WI 54241
 Ph: 920-794-7541



4" x 8" Paver



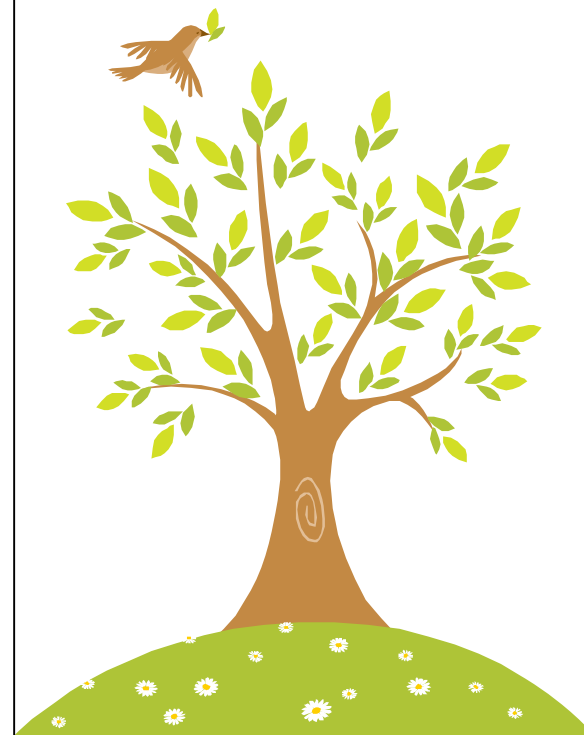
8" x 16" Granite

Order Deadlines

Order by Apr. 30th to have tree planted by Jun. 15th.

Order by Aug. 31st to have tree planted by Oct. 15th.

Tree Donation Program



**City of Manitowoc
 Evergreen Cemetery
 & Parks Division**

*“He, who plants a tree,
 Plants a hope.”*

-Lucy Larcom-

Tree Donation Program

The Tree Donation Program allows you to remember your loved ones by planting a tree to memorialize their life and love. Whether it is a family member or a friend, planting a tree is a beautiful way of remembering their life here on earth and your love for them.

The program allows you to select a tree type as well as the size of the marker. *(Other trees may be considered if they meet our qualifications and fall in the price range.)* The tree may be planted in Evergreen Cemetery or a City park area. A marker will be planted alongside your tree with a special engraved message remembering your loved one.



***Silver and Gold Package Warranties**

The City of Manitowoc will replace or fix damaged markers at no cost to the customer up to five years from date of purchase. Customers may replace markers after the warranty period at retail cost to the City of Manitowoc. Tree warranties are covered by the supplier of the City of Manitowoc for one (1) year from date purchase.

Tree Donation Packages

Bronze Tree Package

Patron may donate a tree of choice (as permitted by City staff). City personnel will pick up the tree from a local nursery and plant the tree in a mutually agreed upon location.

No tree or marker included in price.

\$115 (includes tax)

Silver Tree Package

Patron may select a tree from this pamphlet to be planted by City personnel in a mutually agreed upon location. Package includes a tree of choice and a marker* to be placed at the base of the tree. Marker is a 4 x 8" brick with an engraved message of your choice. Message is a maximum of 3 lines/12 characters per line.

\$470 (includes tax)

Gold Tree Package

Patron may select a tree from this pamphlet to be planted by City personnel in a mutually agreed upon location. Package includes a tree of choice and a marker* to be placed at the base of the tree. Marker is an 8 x 16" granite brick with an engraved message of your choice. Message is a maximum of 5 lines/16 characters per line. This package allows for a more personalized message or favorite verse.

\$560 (includes tax)

Note: Trees in the Silver & Gold packages will be a minimum of 2" in Diameter at Breast Height (DBH).

Choose a Tree

Birch

Grows 40–70' high. Smooth, varicolored or white bark marked by pores. Egg-shaped or triangular leaves are usually bright green turning yellow in fall.



Frontier Elm

Grows 40' high. Small leaves and pyramidal growth. Vibrant Reddish-purple fall color. Fast growing tree which tolerates poor soils.



Hackberry

Grows 50-70' high. Medium to fast growing with a round shape. Bark has cork-like ridges as tree matures. Leaves are dark green changing to yellow in fall.



Hydrangea Tree

Grows 8-25' high. Blooms mid-summer through early fall. Trees need at least 4 hours of sun per day in medium-moist soil. Depending on the variety, some leaves may turn bronze, crimson or burgundy.



Northern Red Oak

Grows 60-75' high. Round shaped tree that grows about 2 feet annually for 10 years. Leaves are a waxy, medium green that change to russet red or bright red in fall.



Red Cedar

Grows 40-50' high. Coniferous pyramidal-shaped tree. Thrives in full sun. Medium-dark green scaly foliage year round. Tolerant to heat, wind and salt.



Serviceberry

Grows 15-25' high with a medium growth rate. Red-orange toned leaves in fall. Blooms beautiful white clustered flowers in March and April, and red berry-like fruits ripen for birds to enjoy in June.



White Pine

Grows 150–210' high. A lovely evergreen with lush 3 to 5" needles making the tree look soft. They have an evergreen foliage.



**Trees native to the area
(or their cultivars) are preferred.
See the back of the brochure
for order deadlines.**